

#### PL-1200RG-N FEATURES



Specifically designed for electro-surgical catheter applications, the robust and cost effective PL-1200RG-N Series offers more features, contacts and termination options than the competition.

#### Overview (intuitive, compact, configurable)

- **Pulse-Lok**® auto-latch / quick release mechanism confirms continuity in critical surgical applications
- 6 color options in a variety of combinations
- Multiple standard and proprietary keying options
- Up to 78 contact positions

#### Order as a full cable assembly (Consult Factory)

- Single or double ended
- Customize your cable bundle
- Overmolded strain relief
- Add components to fulfill design requirements

#### SPECIFICATIONS

#### Material

- Connector Housing: Polyamide 12 (LV3H)
- Molded Core Insulator: Polyamide 46
- Contacts: Brass / Phosphor Bronze
- 30µ" Gold over 50µ" Nickel
- Flammability Rating
- Housing & Coupler: 94HB
- Molded Contact Insulator (core): UL94 V-0

#### Mechanical

- Mating Cycles: 5,000
- Mating Force:
- Mate: 16.5 lbs. Max
- Un-mate: 3.5 lbs. Max
- Unintended extraction: 50lbs. Min.
- Backshell Withdrawal: 18.5lbs. Min.\*\*\*

#### Environmental

- Operating Temp: -20C to +105C\*\*
- Moisture Resistance: to IP-67 (mated)
- Sterilizable: ETO\*\*
- Chem. Resistance: common OR cleaning solvents

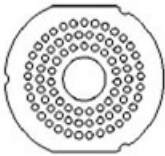
\*\*Consult factory for other sterilizability options

\*\*\*Backshell sold separately

TABLE A:

STANDARD CONTACT CONFIGURATIONS & SPECIFICATIONS

#### Up to 78 Contact Positions

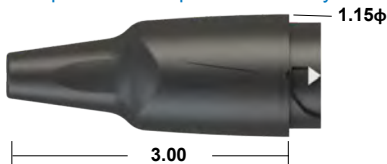


Number of Poles	Contact Size Pin $\phi$ (mm)	Max Wire Gauge	Operating Voltage Max	Operating Current Max (A)*	Mated Contact Resistance (m $\Omega$ )
78	0.5	26	300 V RMS	1.5	<50
59	0.5	26	300 V RMS	1.5	<50
52	0.5	26	300 V RMS	1.5	<50
45	0.5	26	300 V RMS	1.5	<50
26	0.5	26	300 V RMS	1.5	<50
19	0.5	26	300 V RMS	1.5	<50

\*30C Heat Rise Limit

Custom contact inserts are available. Consult factory.

#### Disposable Receptacle Assembly



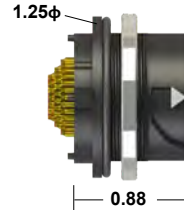
Shown with optional backshell (See Table C)

#### Disposable Receptacle



Select this component from Table B

#### Rear Panel-Mount Receptacle



Mounts from back of panel to achieve an IP-67 Seal

Select this component from Table B

#### STANDARD HOUSING OPTIONS

#### Cable Mount Plug Assembly



Shown with optional backshell (See Table C)

#### Cable Mount Plug Kit



Select this component from Table B

Connector housings are illustrated in teal with grey couplers and backshells.

[www.amphenolalden.com/configurator](http://www.amphenolalden.com/configurator)

Standard color is black on black. See our online configurator for color options at :

\*All dimensions shown in inches except where indicated

For additional information about this, or any other Amphenol Alden product, please contact an Amphenol Alden specialist today, [www.AmphenolAlden.com](http://www.AmphenolAlden.com)

Phone: 1(508) 427-7000  
E-mail: [info@AmphenolAlden.com](mailto:info@AmphenolAlden.com)  
[www.AmphenolAlden.com](http://www.AmphenolAlden.com)

# PL-1200RG-N SERIES

Plastic Shell Auto-Coupling Connectors **78 pole capacity interconnect system**

**TABLE:**

**STANDARD PART NUMBERS**

Number of Poles	Disposable Receptacle	Rear Panel-Mount Receptacle		Cable Mount Plug
	Solder Cup	Solder Cup	PCB	Solder Cup
78	380588	380700	380707	380000
59	380532	380728	380735	380056
52	380504	380756	380763	380112
45	380476	380784	380791	380168
26	380448	380812	380819	380224
19	380420	380840	380847	380280

Note: Part numbers cover black housings in Key 1 configuration. For other color and housing options utilize the Amphenol Alden connector configurator located at [www.amphenolalden.com/configurator](http://www.amphenolalden.com/configurator)

**Options Include:**

Indicator Color Options	Black (std.), Gray, White, Blue, Red, Green, Yellow
Mating Key Options	2 Standard Keys, Proprietary Keys Available
Panel-Mount Thickness Options	.125 (std.), .063, .187, .250

**CONTACT TERMINATION OPTIONS**

## Termination Styles

### PCB (Panel-Mount Receptacles only)



Request Sales Drawing for PCB mounting template

#### Features & Benefits

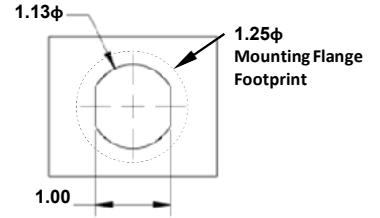
- Available in most pole counts from 19 to 78 Poles
- PCB stand-offs ensure proper positioning
- Convenient packaging high temperature contact cures may be soldered to PCB and snapped into panel-mounted receptacle housing later



#### Features & Benefits

Tiered solder cups provide easy access to center positions. Canted cups facilitate quick and easy wire positioning. Standard on 19-78 pole configurations

### Panel-Mount, Cut-Out Template



Applies to Rear Panel-Mount Receptacles

**TABLE:**

## ACCESSORIES

### Disposable Receptacle Backshell



P/N 107802-01

#### Disposable Receptacle Backshell:

In applications where the disposable receptacle is attached directly to a cable or catheter this one piece backshell is available to protect light gauge wire terminations and provide an anchor point for the catheter jacket. These backshells snap into place and may be encapsulated

### Plug Backshell



P/N 108552-01

### Panel-Mount Receptacle Dust Cover



P/N 109767-01

#### Panel-Mount Receptacle Dust Cover:

The PL1200 Series receptacle dust cover protects the receptacles contact system from dust, moisture, and mechanical stress when the connector pair is disengaged. When secured the dust cover will provide an IP-67 environmental seal. The cover is equipped with a tether for security.

### Plug Soaking Cap



P/N 109766-01

#### Plug Soaking Cap:

The PL1200 Series Plug Soaking Cap is designed to protect the plug's contact system when a cable assembly is being cleaned or not in use. The soaking cap locks onto the plug providing an IP-67 seal that is ideal for soaking in liquid disinfectants. The soaking cap can be permanently attached to a cable assembly by means of a light weight tether.

Note: Black (std.) Gray (optional) & accessories sold separately

## Assembly Instructions

AI-PL1200RGN-01

## ASSEMBLY INSTRUCTIONS

Note: recommended tooling included in assembly instructions

For additional information about this, or any other Amphenol Alden product, please contact an Amphenol Alden specialist today, [www.AmphenolAlden.com](http://www.AmphenolAlden.com)

Phone: 1(508) 427-7000  
E-mail: [info@AmphenolAlden.com](mailto:info@AmphenolAlden.com)  
[www.AmphenolAlden.com](http://www.AmphenolAlden.com)